

Guardian House

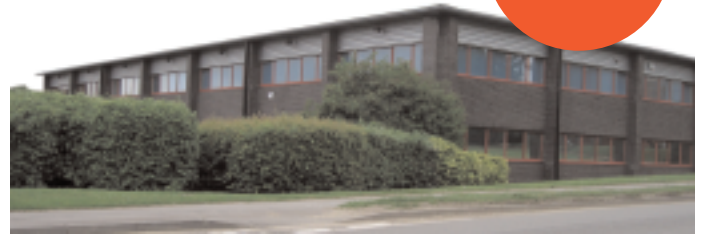


Accommodation for a growing chemical manufacturing and distribution company looking to combine two busy sites - one in Basingstoke and one in Redhill. The solution - a custom built facility: a building of adequate size, with enough space to allow for future growth. A prospect was located in Basingstoke but it was in need of considerable modernisation...

A new mezzanine floor was installed to accommodate chemical mixing tanks and the area below was adapted to incorporate a fully serviced "wet area" to allow for safe bottling of chemicals.

The second floor offices were built to the client's specification and fully set up for both power and data. The control point for all data communication being a purpose built secure server room.

There was, of course a requirement for staff amenities and a fully fitted kitchen/eating area was added to both the office area and the warehouse area.



A job well done...

"During the works on Guardian House CBS proved themselves to be a very reliable company and a pleasure to deal with. The feed back and communication from the Project Manager was exceptional. CBS provided valuable input at the planning stages, giving advice and alternative solutions when the need arose."

Colin Pratt
Technical Director, Guardian House

Project Data

Category:	Refurbishment
Description:	Derelict 1700m ² warehouse/office building
Timescale:	3 months
Value:	£350,000

Services

Hot and cold water, drainage, heating, air conditioning, power, data, fire and security systems, project management, planning and building regulation applications, relocation management, interior design and space planning.

Complete Project Management

At CBS we understand the demands of a busy working office and all the facets of creating a comfortable working environment while maintaining efficient use of space. Should you wish to update or improve your existing working environment CBS can provide a complete solution.

With careful planning and project management the refurbishments can be carried out with minimum disruption to your business. We will provide you a single point of contact, a project coordinator, who will manage specially selected teams of construction professionals, and our own directly employed engineers, ensuring a smooth operation. We will even move you in!

Comfort Building Services Ltd

Comfort Building Services are based in Basingstoke and operate within a radius of approximately 100 miles. CBS employ a crew of engineers who's combined skills cover all areas of building services.

Investors in People

Active participants of the Investors in People programme and with the policy of developing their own engineers CBS operate an apprentice-training programme in conjunction with the local colleges.

Corgi, HVCA, NICEIC

In accordance with the requirements of their trades CBS engineers hold the relevant professional qualifications.



www.cbsuk.com

Guardian House



1

1. Boardroom



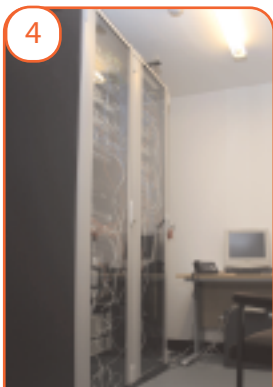
2

2. Filing wall



3

3. Toilets



4

4. Server room



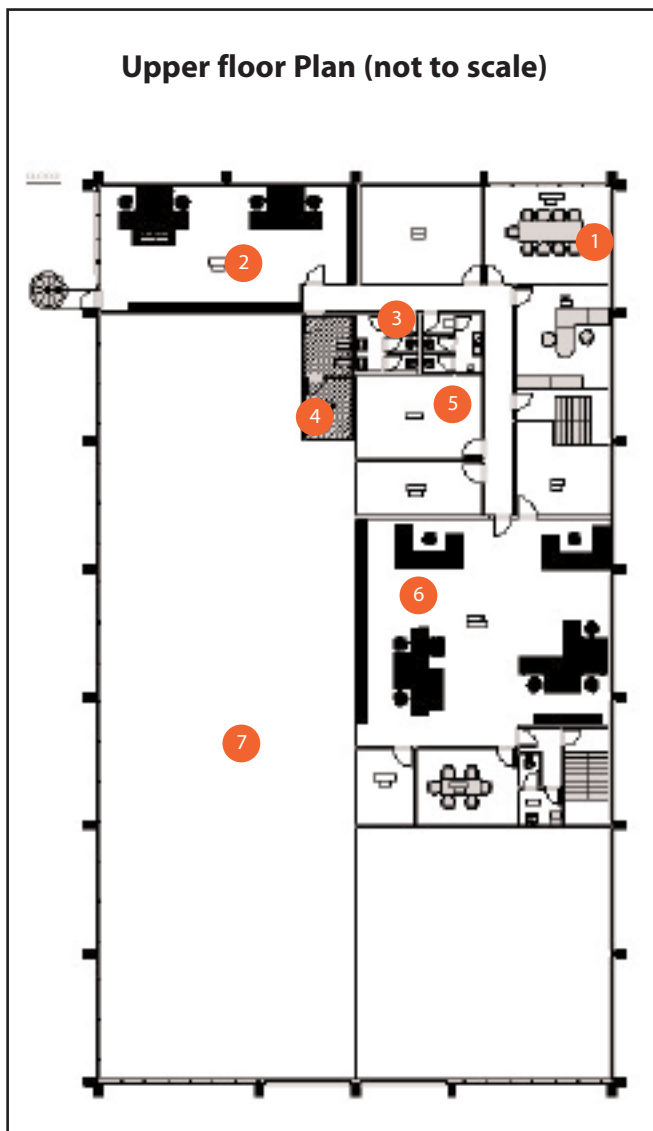
5

5. Kitchen



6

6. Arcitectual ceiling



7

7. Warehousing & Manufacturing

www.cbsuk.com

Comfort Building Services Ltd, 7 Lennox Mall, Lennox Road, Basingstoke, Hampshire, RG22 4DF 01256 842500 01256 814661, www.cbsuk.com, enquiries@cbsuk.com

